

# POTTERS CROSSING Historic Village District Edison Township, Middlesex County, NJ

Project Managed by Rev. John Richardson  
Graphics and Illustrations prepared by Roy K. DeBoer

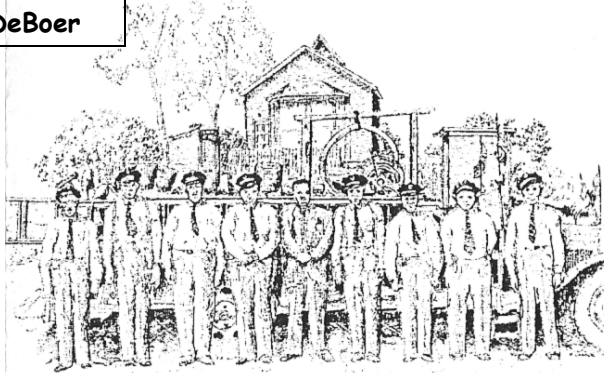


Site #1  
R.J. Potters Farmstead  
circa 1933 with outbuildings

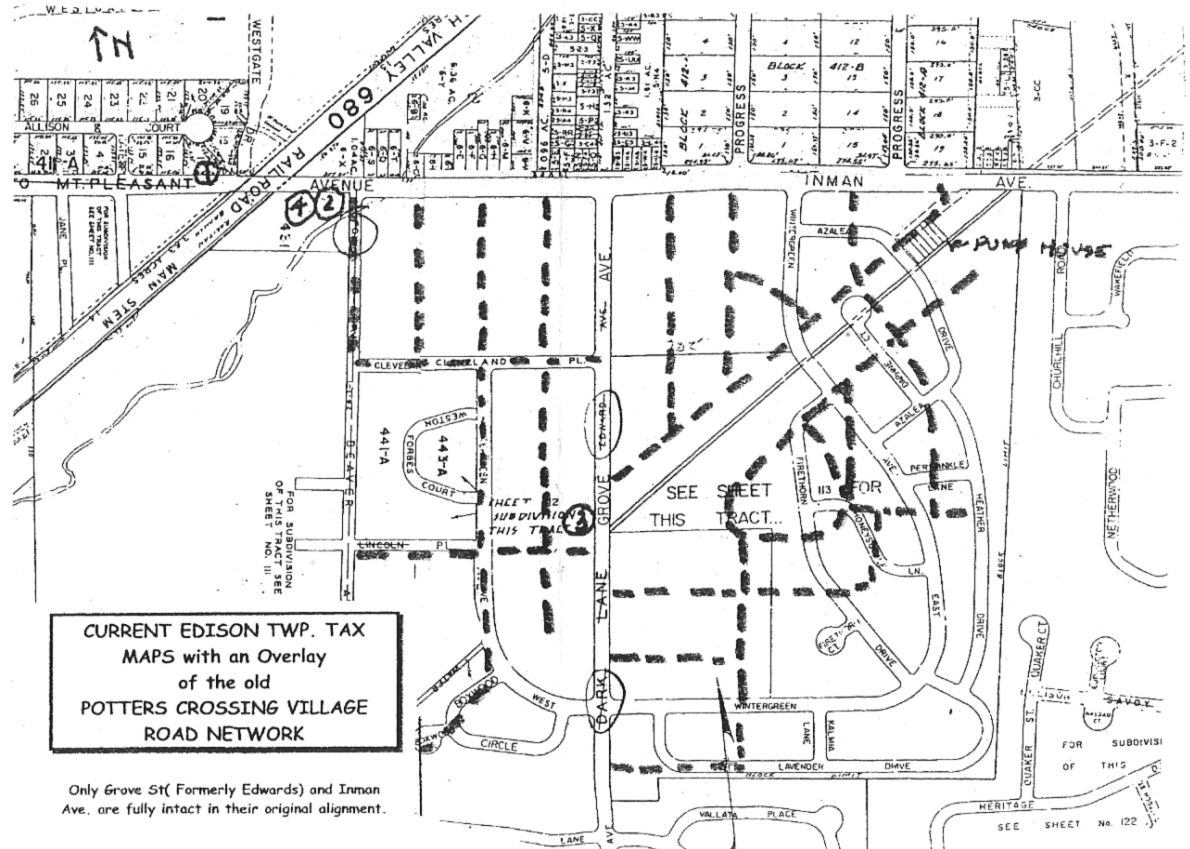


Site #2  
Bobby Martins Orchestra  
World Famous Jazz Musicians  
circa 1930  
(Martin owned Sun Valley in  
his retirement years)

Site #3  
Potters Crossing Vol. Fire  
Department Members Pictured  
in old Edwards Rd. looking west  
towards the Old Mt. Zion Church  
in the background.

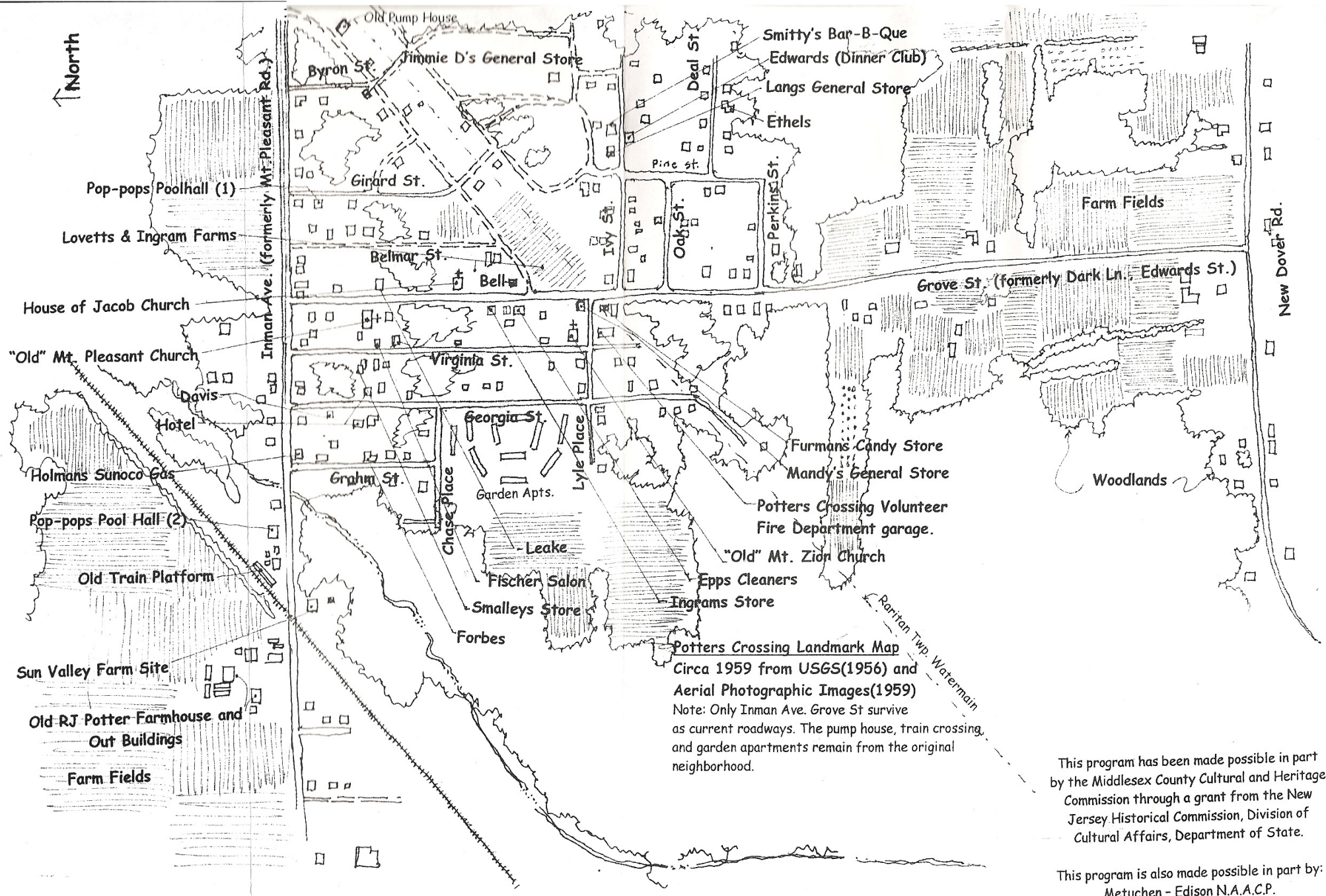


Site #4  
Sun Valley Farm  
Hotel/ Resort Site  
Along Inman Ave.  
circa 1940's



CURRENT EDISON TWP. TAX  
MAPS with an Overlay  
of the old  
POTTERS CROSSING VILLAGE  
ROAD NETWORK

Only Grove St (Formerly Edwards) and Inman  
Ave. are fully intact in their original alignment.



This program has been made possible in part by the Middlesex County Cultural and Heritage Commission through a grant from the New Jersey Historical Commission, Division of Cultural Affairs, Department of State.

This program is also made possible in part by:  
 Metuchen - Edison N.A.A.C.P.  
 S.H.A.R.E. of Potters Crossing



ERROR: undefined  
OFFENDING COMMAND:

STACK: